



Building Resilient Communities

Leah Swain
Rural Action Yorkshire

What is a Resilient Community?

In the context of winter health a resilient community is:

- ✓ Able to use available resources and community assets to keep residents safe, well and warm
- ✓ Proactively planning how the community can improve the health and wellbeing of all residents
- ✓ Prepared and able to respond to, withstand and recover from adverse situations



How can we support community resilience?

- Support communities to be self-supporting and maintain their own wellbeing
- Support communities be prepared for, and respond to, emergencies and adverse situations
- Provide clear signposting to services that can help residents stay healthy



Support communities to be
self-supporting and
maintain their own
wellbeing



W
I
N
T
E
R

LET IT
SNOW

A woman with purple hair in a white textured sweater stands with her back to the camera, looking towards the table.

A man with glasses and a black jacket is seated at the table, leaning forward as if preparing food or drinks.

A woman with glasses and a black jacket stands behind the table, looking towards the camera.

A woman in a high-visibility yellow vest and black jacket stands near the doorway, looking down at something in her hands.

Two small white cards with text are placed on the blue table in the foreground.

THIS IS A GREEN
CLEANING AREA





Log in to your account
Email
Password
Login Forgotten password?

Not a member?
Join Now
It's Free

Where friends and neighbours can give and get help, support, favours and treats from each other.



makes it EASY to ask, EASY to offer, EASY to give and EASY to get

Video call interface showing two participants: a woman in a garden and a man in a room. Includes icons for heart, clock, and share.

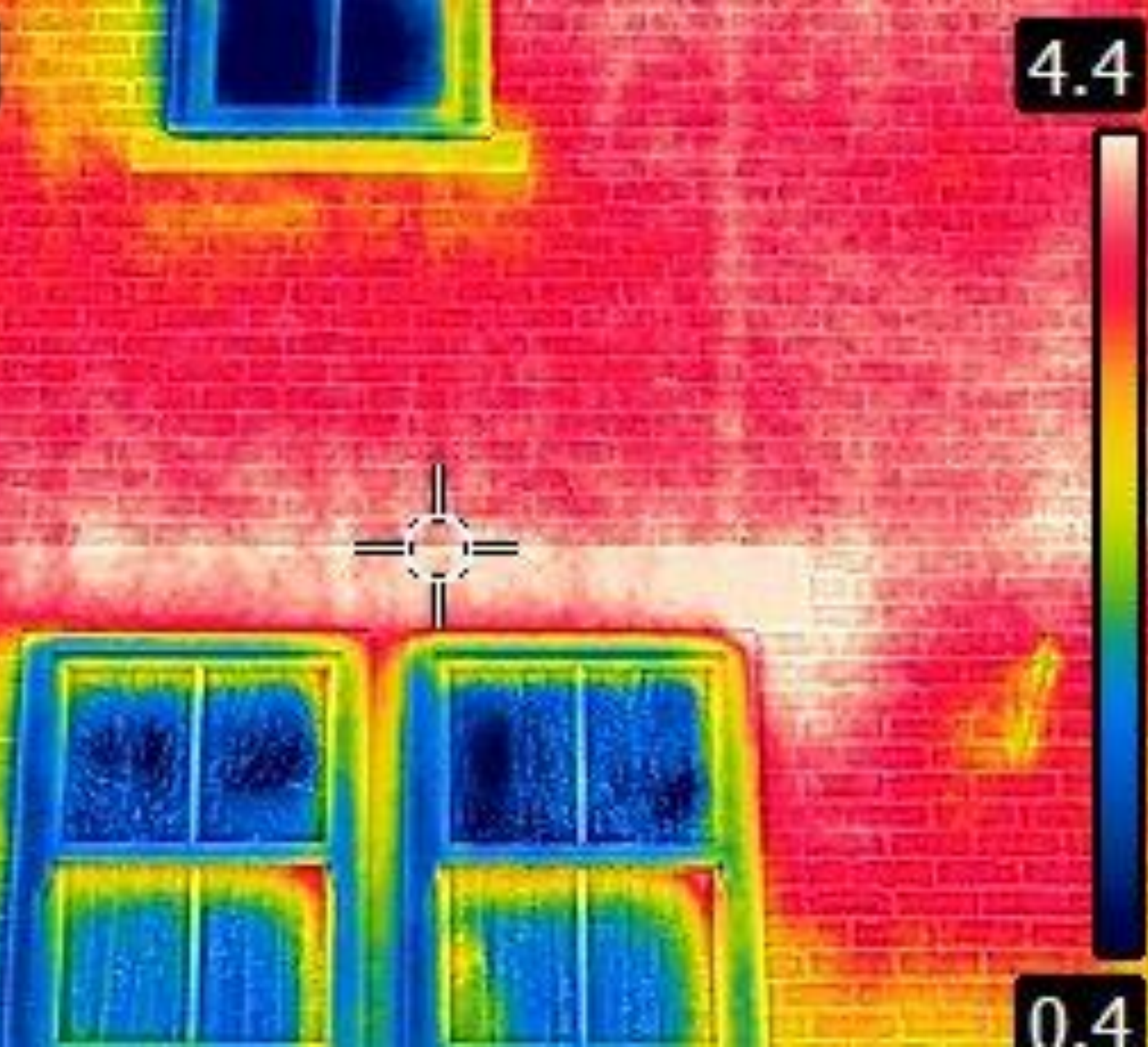


5.7 °C

4.4

FLIR

0.4



...from Stone.
...these Musicals?
...of Underwear.
...re Famous Burials.
...industry and Buffer Girls.
...an Christmas.
...ry is not all boring stuff

...one Youth
SCO
THE
...nity Centre
6th March
JJME
7:30 - 10:30
WEST CRIME & SAFETY
UB GROUP



...y group near you today...
FREE
...member
...worth
£10
...0:00 am, 7:00 pm
...ommunity Centre,
...ect
...07708 327963
...ngworld.com/
...y
8000
...world.com

Call my Bluff
A light hearted wine tasting competition
of fair trade wines
St. John's Community Centre, Penistone
Friday 12th March at 7.30p.m.



Tickets £6
available from Clark's Chemists, High St.
Traidcraft stall, Thursday mornings, St John's
Community Centre
or phone Carolyn Morris on 01226 790955

ed. 24th March 2010 at 8.15pm
St John's Community Centre

alconer was born in Chesterfield and educated in Sheffield. He gained a
Diploma in Photography at Norton College. Since then Rob has become
a professional photographer, travelling the world, and has a collection of 20,000
photos.
His lecture on the 24th called "Pictures with Altitude", is based on a trek
to **Base camp** at an altitude of 18,000, and walking 85 miles. He also
d Kala Palther to get brilliant shots of Everest itself. He travelled with
Adventure Company" and part of the trip was a number of days in
ndu, the capital of Nepal, home to amazingly friendly people. The sights
seen along the way are captured in Rob's photos.
Whether you are a photographer, walker, or seasoned traveller, come
Robert's lecture. We are sure you will enjoy the evening.

...available on a first come first served basis are available from Paul
light, the Penistone Camera club chairman on 01226 767862. Just give
me and my photos on the night.
...mission price £2-50. Light refreshments will be served.



Our programme includes:
Competitions
Lectures
Outings
Technical Demo's
Inter Club Events

Come along and receive a warm welcome
For further details contact:
Paul Cartwright on 01226 767862
or Chris Park on 01226 765614

Every Thursday
Penistone Community
Centre
10am until 12 noon
Everyone welcome

Penistone Judo Club
Instructor: **Mat Hoodhead, 3rd Dan.**
"The Sports Way"



For Boys and girls aged 6-11

Saturdays
9.30-11.00 am

07963720128

Mat Fee £3.00



Liver transplant
next Tuesday 7am

St Johns
Community
Centre
Thursday
6.15pm
For other meetings, in your area call
01226 123 233

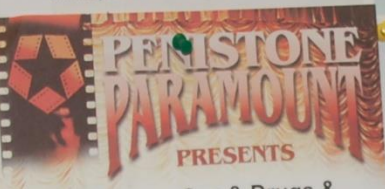
WEAVER'S COURT
UNWIN STREET
invite you to
Meet new friends
GAMES
QUITTES
GUEST SPEAKERS
Friday 9 March
Mrs I Selby - props a costumes 1.30 - 3.00pm
Friday 9 April
Mrs S Bromley - Mariposa Jewellery 1.30 - 3.00pm
CT admission - includes tea, cakes and biscuits
EVERYBODY WELCOME

JOIN YOUR LOCAL
MEETING TODAY

LEARN NEW HABITS

Penistone
St. John's Community Centre
Church Street
S30 5AR

Thursday 6th March 8.15pm



**Sex & Drugs &
Rock & Roll (15)**
Fri 26 Feb at 7.30pm
Sun 28 Feb at 2pm & 6pm
Mon 1 to Thurs 4 March at
7.30pm



ON RELEASE
Alice in Wonderland
(PG)
Fri 5 March at 4.30pm & 7.30pm
Sat 6 March at 2pm, 4.30pm &
7.30pm
Sun 7 March at 2pm & 6pm
Mon 8 to Thurs 11 March at
7.30pm



SHEDDERSBY ROAD, PENISTONE, SHEFFIELD S36 6DY
BOX OFFICE: 01226 767532
WEB SITE: www.penistoneparamount.co.uk
EMAIL: info@penistoneparamount.co.uk



Public Meeting!
Help set Policing
Priorities. 16/03/10

The next Penistone PACT Meeting (Partners And
Communities Together) will be held at Penistone Fire
Station at 10am Tuesday 16th March 2010. This is a public
meeting and all are welcome. Come along and help set
Policing Activity in your area.

We're here to help

To contact your Penistone Safer Neighbourhood
Team, call 01226 736387
Or visit: neighbourhood.southyorks.police.uk

WeightWatchers
or call 0845 607 0685

**HOW TO LOSE
FAT & TONE UP**

Without Jumping, Bouncing or Being Breathless
Recommended By Medical Experts
**BEGINNERS PILATES
CLASSES**

•FREE - YOUR FIRST CLASS FREE•

Low Impact, Low Intensity Pilates Based Exercise Classes for All
(16-60+) Ages & Abilities

Mondays 2.30-3.30pm & Wednesdays 1-2pm
at Penistone Community Centre

**The Darryl Marshall
Community Fund**



Darryl Marshall, who was a former Penistone Community Constable
and an active member of Penistone Round Table, spent
schemes in the Penistone
Marshall.

**...You haven't seen what Love Wood Furniture
can do**
Set in beautiful Upper Philips, Close Leacock,
17th century converted mill premises during
weekends. Furniture and services to suit your
needs.
Outgoing and welcoming team.
Free professional advice. Cash payments will
be a financial bonus for you to come and
visit. Home improvements through us is
simple!
What is Love Wood Furniture?
Love Wood Furniture is a
family of companies
specialising in
interior design and
interiors and new
furniture.
It's how it's the way of providing quality to the world and has good
about doing it. It's about life. It's an experience, without which we all know
we'd be there but, which will make you stick with the program you see
get results.
...you could save someone's life...today
For your nearest venue type your postcode into
blood.co.uk or call 0300 123 23 23
Please don't leave it to someone else!

Classes to be held at St John's Community Centre, Church St, Penistone
on Friday nights at 8.00pm - 8.15pm and 8.30 - 8.45pm (EARSING ROAD 17
01226 767862)
ONLY £3.00 PER CLASS - EVERYONE WELCOME

For more information or to book a class contact Stuart on
01226 760354 or 0781 893 2668
or email stuart@roundtable.co.uk
Further details also available at www.roundtable.co.uk or www.facebook.com

...ve blood...

Friday 19 March
2.45 & 14.00 to 16.00 & 17.00 to 19.15

ST JOHNS COMMUNITY
CENTRE, CHURCH STREET
PENISTONE

...you could save someone's life...today
For your nearest venue type your postcode into
blood.co.uk or call 0300 123 23 23
Please don't leave it to someone else!

**Trans Pennine
Surfacing v**
From 22 Feb
end March
Weekdays 8
Penistone
Romticle
including
Willow
Please tr
TPT dur
HARNS



Support communities to be prepared for, and respond to, emergencies and adverse situations







TELEPHONE

DEFIBRILLATOR

PARISH COUNCIL



Stronger Communities Priorities





Provide clear signposting to
services that can help
residents stay healthy

Warm



Well

in North Yorkshire





Rural Action Yorkshire
Enabling Your Rural Community

Tower House
Askam Fields Lane, Askham Bryan, York
YO23 3NU
Tel: 0845 313 0270, Fax: 0845 313 0271
Email: info@ruralyorkshire.org.uk
www.ruralyorkshire.org.uk